

2018 Annual Report

New Jersey Pinelands Commission



Permanent Land Protection



The Pinelands Commission provided funds to preserve this 438-acre property in Southampton and Woodland townships in 2018.

Photo/Paul Leakan

In 2018, the Commission contributed \$408,178 from its Pinelands Conservation Fund (PCF) toward the permanent preservation of 579 acres in the Pinelands.

Three projects were funded, and they are located in Ocean Township, Southampton Township, Woodland Township and Barnegat Township.

Pinelands Development Credit Program

In 2018, 10 PDCs were allocated by the Commission to eight sending area properties.

A total of 31.25 PDCs were sold, with an average sales price of \$36,212 per PDC.

A total of 39.25 PDCs were redeemed for residential development in Egg Harbor, Hamilton, Shamong, Southampton, Tabernacle and Waterford townships during 2018, nearly double the number that were redeemed throughout the Pinelands Area in 2016 and 2017 combined.



This farm in Tabernacle Township has been permanently preserved through the Pinelands Development Credit Program.

Photo/Paul Leakan

Reviewing Municipal Ordinances

During 2018, the Commission received and reviewed 177 master plan and ordinance amendments from 43 different municipalities and one county.

The Commission staff works closely with Pinelands municipalities to help them achieve their objectives in a manner that is consistent with the Comprehensive Management Plan.

In 2018, many municipalities were focused on adopting and implementing their Housing Elements and Fair Share Plans in order to satisfy their affordable housing obligations.

Many redevelopment plans were also adopted as a way of facilitating specific development projects or encouraging the rehabilitation of existing buildings.

Long-Term Economic Monitoring Program

E6

Cranberry & Blueberry Production
U.S.D.A. National Ag. Statistics Service/N.J. Ag. Statistics Service 1980 - 2017
Updated for 2018 LTEM with 2017 data

Highlight

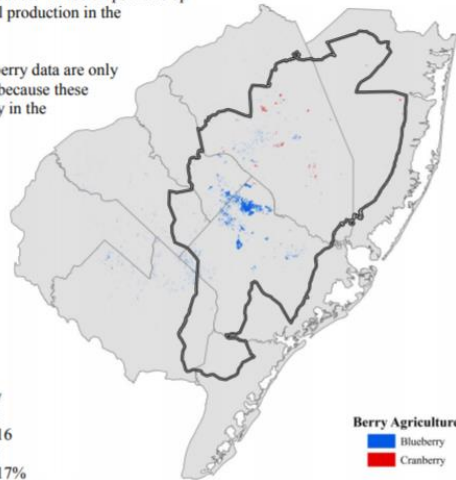
Cranberry production and value decreased significantly in 2017, marking the lowest yield and price since the mid-2000s. The total used production was 196,000 barrels, with a value of \$16,451,000.

Blueberry production and value increased for the year, with blueberry prices reaching near highs of the mid-2000s and late 1980s. Growth in value outpaced increased production for the year. The blueberry harvest was estimated at 443,860,000 pounds, with a value of \$83,788,000.

Description: Cranberries and blueberries are staples of the Pinelands for their economic and cultural significance. These crops make up a significant amount of the agricultural production in the Pinelands.

Unit of Analysis: Cranberry and blueberry data are only available at the state level. However, because these two crops are found almost exclusively in the Pinelands, statewide figures provide sufficient information for the purposes of this analysis. Unless otherwise noted, the dollar amounts below are adjusted for inflation to 2017 dollars.

Findings: The cranberry crop statistics all decreased in 2017. Along with all other cranberry crop statistics, yield per acre was down by more than 13%. The volume of the cranberry crop used was the lowest since 2004. Total volume of the used portion from the cranberry crop fell by 196,000 barrels. It decreased by about 30% below the volume used of the 2016 cranberry crop. Cranberry prices per pound also dropped in 2017 by about 17% compared to 2016. Cranberries were priced at 37cents per pound, which was the lowest price in fifteen years. The total value of the crop was estimated to be \$16,451,000. The acreage in



In 2018, the Commission issued a two-year report that included economic data from 2015 and 2016 as part of the Long-Term Economic Monitoring Program.

Staff also continued to re-examine the program, with the assistance of stakeholders and by contracting with Rutgers University faculty.

As a result of the feedback, the Commission will add new variables to the program.

Additionally, staff has started to release economic data briefs online as the briefs are completed rather than waiting to issue the information as part of a full annual report.

Economic data briefs such as the one above are now available on the Commission's website

Brotherton Archaeological Investigation



Above: Ground-penetrating radar surveys being undertaken at the Brotherton site.

The Commission initiated an archaeological investigation at the former site of the eighteenth century Brotherton Reservation in Shamong Township.

The Commission partnered with the Archaeological Society of New Jersey, Temple University, three Lenape tribes and Shamong Township to conduct the investigation.

Archaeologists used ground-penetrating radar to identify buried physical features. The data will help to prioritize excavations.

Regulatory Activities

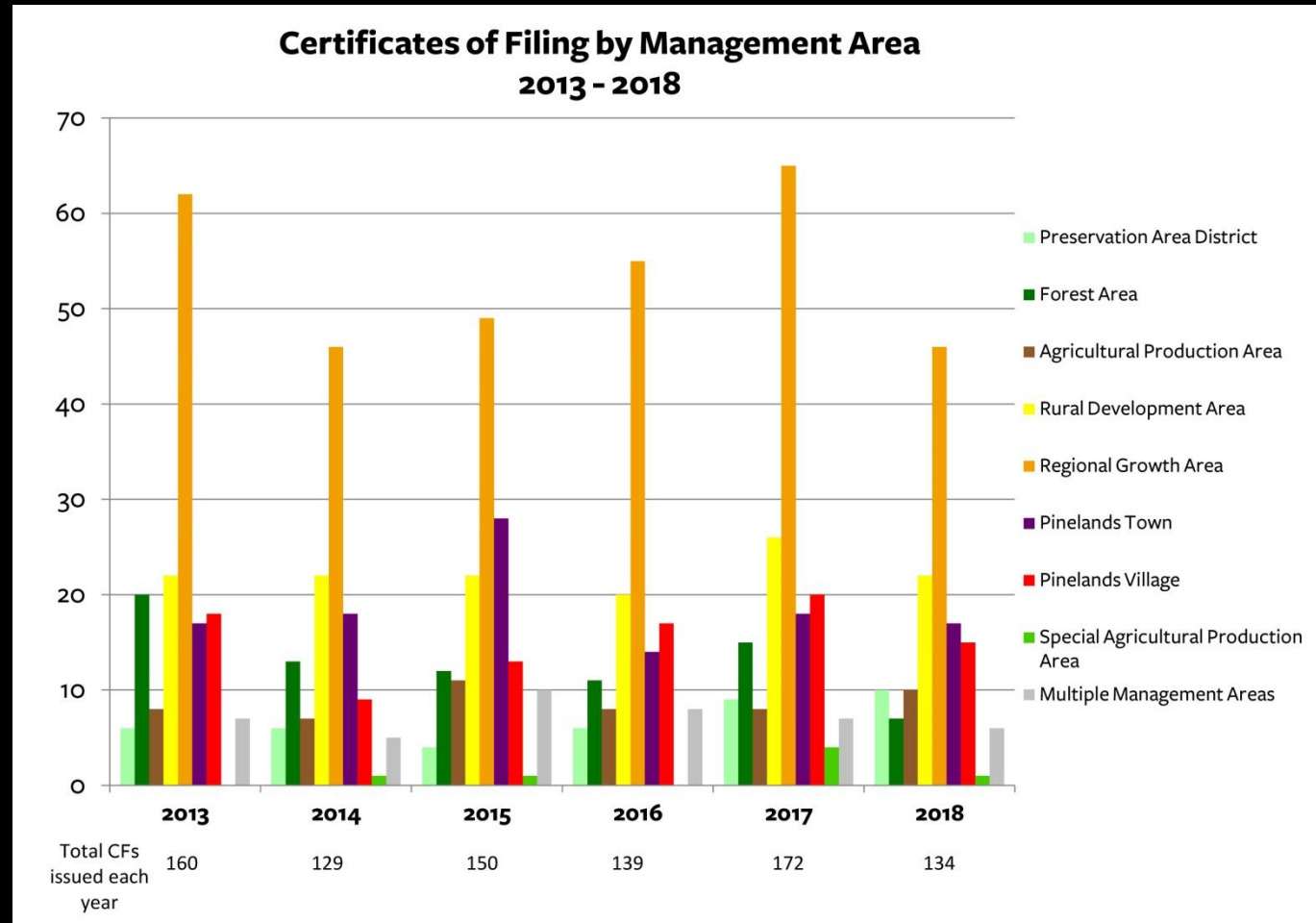
Certificates of Filing Issued in 2018 by Management Area and Type of Development

	Residential	Commercial	Infrastructure	Institutional	Resource extraction	Totals by management area
Preservation Area District	3	4	1		2	10
Forest Area	5	1			1	7
Agricultural Production Area	8	2				10
Rural Development Area	17	2	1		2	22
Regional Growth Area	26	17	1	2		46
Pinelands Town	9	8				17
Pinelands Village	8	6		1		15
Special Agricultural Production Area	1					1
Multiple management areas	1	1	1	1	2	6
Totals by type of development	78	41	4	4	7	134

Of the 134 CFs that were issued in 2018, most involved proposals for residential development, followed by commercial development.

Regulatory Activities

The Commission issued similar numbers of CFs from 2013 to 2018, with the majority of the proposals for development located in Regional Growth Areas.



Regulatory Activities

The Commission:

- Approved 27 applications for public development in 2018.
- Issued 21 Recreation Permits for enduros.
- Resolved a total of 99 violations of Pinelands regulations in 2018.

Science & Research Activities

In 2018, Commission scientists continued to conduct Long-term Environmental Monitoring Program research.

Scientists continued to measure growing-season pH and specific conductance in 47 streams on a bimonthly basis, as they have done since 2006.



Commission scientists monitor 47 streams in the Pinelands, including the Batsto River at Hampton Furnace (shown above).

Photo/ John Bunnell

Science & Research Activities



VULNERABILITY AND COMPARABILITY OF NATURAL AND CREATED WETLANDS



Final Report Submitted to the
U.S. Environmental Protection Agency

Commission scientists completed two related studies and prepared a single report, titled “Vulnerability and Comparability of Natural and Created Wetlands.”

Scientists identified and mapped nearly 6,000 natural ponds, excavated ponds and stormwater basins throughout the Pinelands. They also assessed the vulnerability of these ponds, and evaluated damages caused by off-road vehicles.

The Commission can use the results of this research to identify and prioritize ponds that need enhanced protection and evaluate potential planning and regulatory measures to better protect these ponds.

Science & Research Activities



Ryan Fitzgerald of Herpetological Associates holds two clutches of recently excavated corn snake eggs that were collected as part of the corn snake study. Photo/John Bunnell

Joint Corn Snake Study:

In 2017, the Pinelands Commission began to collaborate with Herpetological Associates, The College of New Jersey, and the NJDEP to conduct an intensive research project on the corn snake in the Pinelands.

Collaborators continued their work throughout 2018.

The goal of the research is to better understand the habitat requirements and life history of the corn snake in order to develop meaningful conservation management programs for the species and ensure its continued survival in the Pinelands.

Public Information, Education & Outreach

Raising Awareness, Fostering Stewardship:

In 2018, the Commission's staff organized and executed more than a dozen educational programs that raised awareness and appreciation of the Pinelands.

This included in-class presentations and special events such as the spring and summer Pinelands Short Courses.

Staff educated more than 2,300 people about the Pinelands and responded to over 600 public inquiries about recreation and other non-development application questions in 2018.



Joel Mott, a Principal Public Programs Specialist with the Commission, provided an overview of the Pinelands during the second annual Pinelands Summer Short Course in Hammonton.

Photo/Paul Leakan

Public Information, Education & Outreach



Contractors installed the new Candace McKee Ashmun Pinelands Education Exhibit at the Commission's headquarters in 2018.